

Session Name: Current Session

Date Created: 16.11.2017 18:09:03

Active Participants: 73 of 73

Average Score: 29,94%

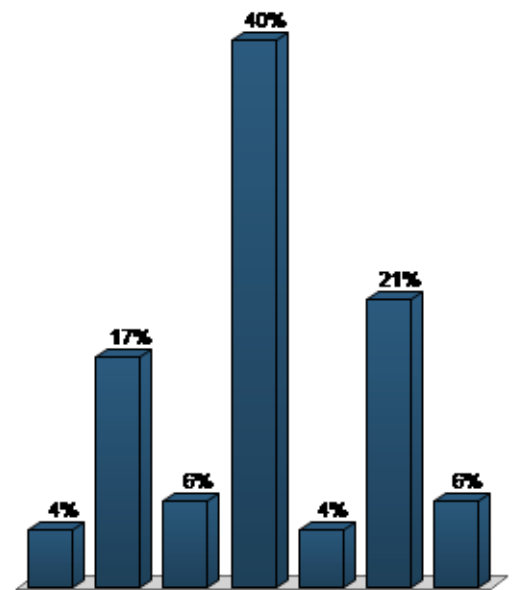
Questions: 17

## Results by Question

Session does not contain standards

### 1. Kust said infot tänase ürituse kohta? (Multiple Choice)

	Responses	
	Percent	Count
tartartu.ee kodulehelt	4,26%	2
Facebookist	17,02%	8
Stendilt trepikojas	6,38%	3
Meililisti kaudu	40,43%	19
Ühistu koosolekult	4,26%	2
Tuttavalt või naabritl	21,28%	10
Mujalt	6,38%	3
<b>Totals</b>	<b>100%</b>	<b>47</b>

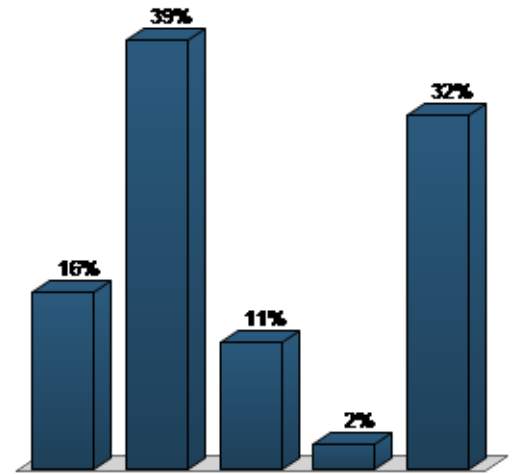


Question Statistics	
Mean	4,13
Median	4,00
Variance	2,58
Standard Deviation	1,61

Difficulty & Discrimination	
Mean Score of Correct	NA
Mean Score of Incorrect	NA
Standard Deviation of Scores	NA
Difficulty Index	NA
Discrimination Index	NA

## 2. Kui kursis oled oma maja rekonstrueerimise plaanidega? (Multiple Choice)

	Responses	
	Percent	Count
Olen täielikult kursis	15,91%	7
Üldjoontes olen	38,64%	17
Midagi olen kuulnud	11,36%	5
Ei ole üldse kursis	2,27%	1
Ei ela pilootala piirkonnas või projekti raames rekonstrueeritavas majas	31,82%	14
<b>Totals</b>	<b>100%</b>	<b>44</b>

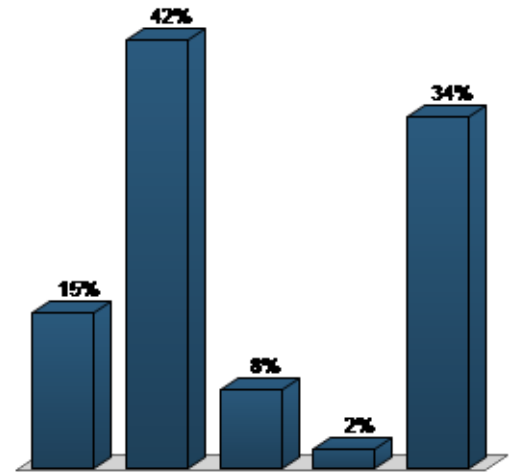


Question Statistics	
Mean	2,95
Median	2,00
Variance	2,32
Standard Deviation	1,52

Difficulty & Discrimination	
Mean Score of Correct	NA
Mean Score of Incorrect	NA
Standard Deviation of Scores	NA
Difficulty Index	NA
Discrimination Index	NA

**3. Kas Sul on piisavalt infot, milliseid muudatusi toob Sinu jaoks kaasa teie maja rekonstrueerimine?**  
**(Multiple Choice)**

	Responses	
	Percent	Count
Olen täielikult informeeritud	15,09%	8
Enam-vähem on ülevaade olemas	41,51%	22
Väga napp info	7,55%	4
Info puudub täielikult	1,89%	1
Ma ei ela pilootala piirkonnas või projekti raames rekonstrueeritavas majas	33,96%	18
<b>Totals</b>	<b>100%</b>	<b>53</b>

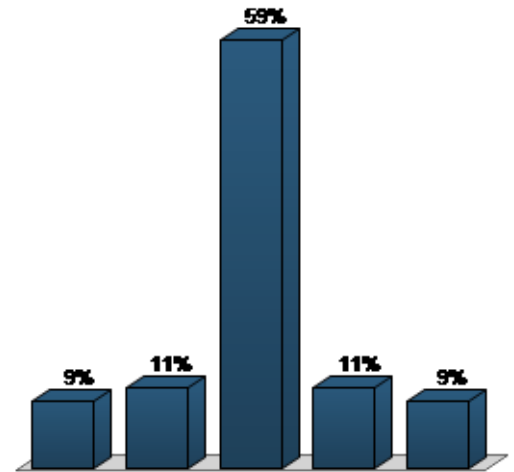


Question Statistics	
Mean	2,98
Median	2,00
Variance	2,40
Standard Deviation	1,55

Difficulty & Discrimination	
Mean Score of Correct	NA
Mean Score of Incorrect	NA
Standard Deviation of Scores	NA
Difficulty Index	NA
Discrimination Index	NA

4. Kui elad kortermajas, siis kui tihedaks hindad enda majaanike omavahelist suhtlust? (Multiple Choice)

	Responses	
	Percent	Count
Suhtlus peaaegu puudub	9,26%	5
Suhtleme peamiselt vaid ühistu koosolekutel	11,11%	6
Tuttavaid "nägusid" ikka teretatakse, teatakse, kes on naabrid	59,26%	32
Suheldakse tihedalt	11,11%	6
Ma ei ela kortermajas	9,26%	5
<b>Totals</b>	<b>100%</b>	<b>54</b>

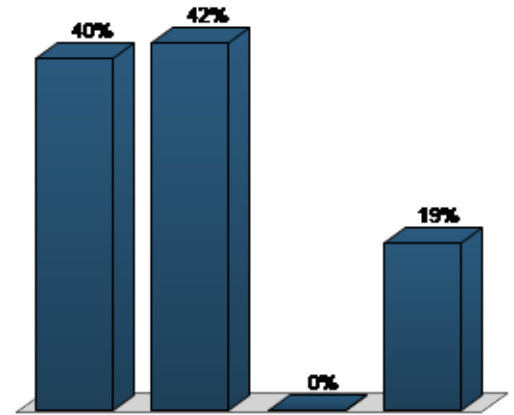


Question Statistics	
Mean	3,00
Median	3,00
Variance	0,96
Standard Deviation	0,98

Difficulty & Discrimination	
Mean Score of Correct	NA
Mean Score of Incorrect	NA
Standard Deviation of Scores	NA
Difficulty Index	NA
Discrimination Index	NA

5. Kas soovid, et majaelanikud suhtleksid omavahel rohkem? (Multiple Choice)

Responses		
	Percent	Count
Jah, kindlasti	39,62%	21
Pigem jah	41,51%	22
Pigem ei	0%	0
Ei ole oluline	18,87%	10
<b>Totals</b>	<b>100%</b>	<b>53</b>

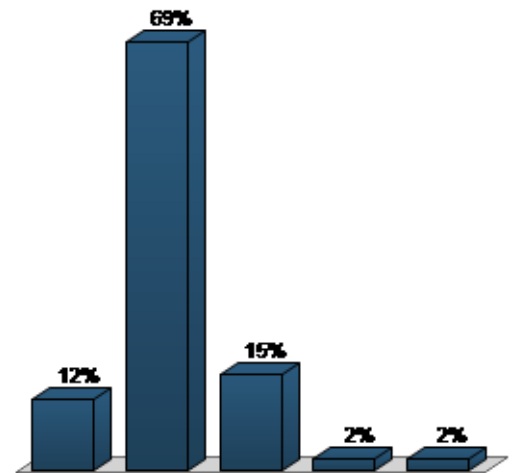


Question Statistics	
Mean	1,98
Median	2,00
Variance	1,15
Standard Deviation	1,07

Difficulty & Discrimination	
Mean Score of Correct	NA
Mean Score of Incorrect	NA
Standard Deviation of Scores	NA
Difficulty Index	NA
Discrimination Index	NA

6. Kas oled enda arvates energiasäästlik tarbija? (Multiple Choice)

Responses		
	Percent	Count
Jah, kindlasti	11,54%	6
Pigem jah	69,23%	36
Pigem mitte	15,38%	8
Ei	1,92%	1
Ei oska öelda	1,92%	1
<b>Totals</b>	<b>100%</b>	<b>52</b>

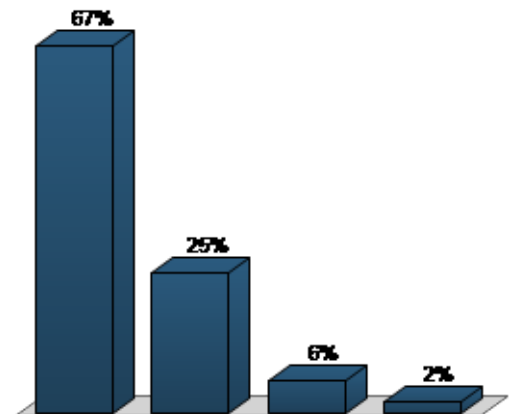


Question Statistics	
Mean	2,13
Median	2,00
Variance	0,50
Standard Deviation	0,71

Difficulty & Discrimination	
Mean Score of Correct	NA
Mean Score of Incorrect	NA
Standard Deviation of Scores	NA
Difficulty Index	NA
Discrimination Index	NA

7. Kas tahaksid rohkem teada energia-säästu, keskkonnateadliku tarbimise jmt kohta? (Multiple Choice)

	Responses	
	Percent	Count
Jah, need teemad on huvitavad	66,67%	34
Mingil määral	25,49%	13
Pigem ei tahaks või vähesel määral	5,88%	3
Ei taha üldse, need teemad mind ei huvita	1,96%	1
<b>Totals</b>	<b>100%</b>	<b>51</b>

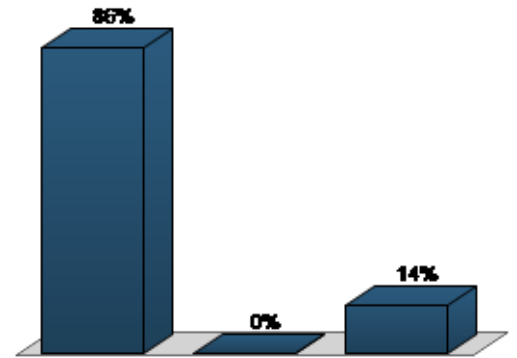


Question Statistics	
Mean	1,43
Median	1,00
Variance	0,48
Standard Deviation	0,69

Difficulty & Discrimination	
Mean Score of Correct	NA
Mean Score of Incorrect	NA
Standard Deviation of Scores	NA
Difficulty Index	NA
Discrimination Index	NA

8. Kas oleksid nõus, et Sinu vanad korteriaknad võetakse uuesti ringlusesse (st annetatakse)? (Multiple Choice)

Responses		
	Percent	Count
Jah	86,27%	44
Ei	0%	0
Ei ole kindel	13,73%	7
<b>Totals</b>	<b>100%</b>	<b>51</b>



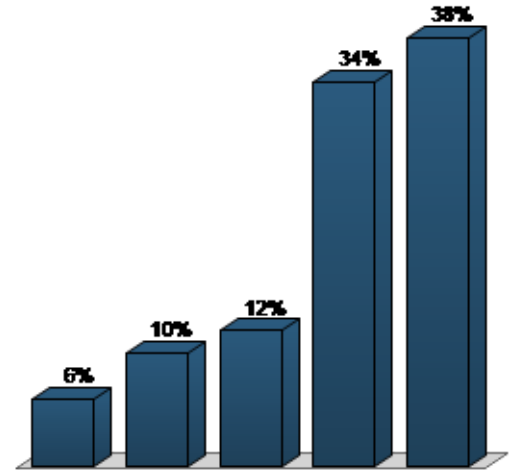
Question Statistics	
Mean	1,27
Median	1,00
Variance	0,47
Standard Deviation	0,69

Difficulty & Discrimination	
Mean Score of Correct	NA
Mean Score of Incorrect	NA
Standard Deviation of Scores	NA
Difficulty Index	NA
Discrimination Index	NA



### 9. Kas ja kui tihti kasutad Tartus ühistransporti? (Multiple Choice)

	Responses	
	Percent	Count
Igapäevaselt	6%	3
Mõned korrad nädalas	10%	5
Mõned korrad kuus	12%	6
Mõned korrad aastas	34%	17
Ei kasuta ühistransporti	38%	19
<b>Totals</b>	<b>100%</b>	<b>50</b>

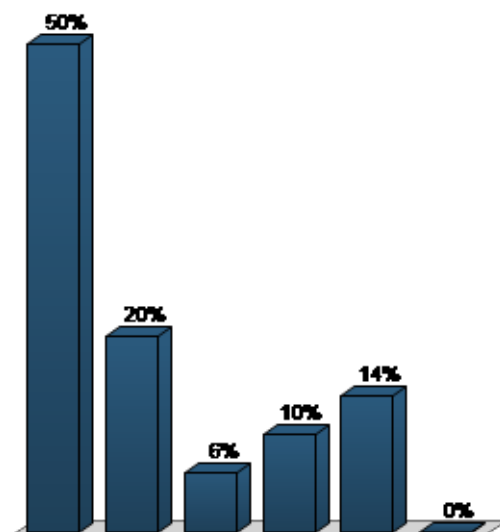


Question Statistics	
Mean	3,88
Median	4,00
Variance	1,43
Standard Deviation	1,19

Difficulty & Discrimination	
Mean Score of Correct	NA
Mean Score of Incorrect	NA
Standard Deviation of Scores	NA
Difficulty Index	NA
Discrimination Index	NA

**10. Millise SmartEnCity projekti puudutava teema kohta sooviksid edaspidi kõige rohkem infot saada?  
(Multiple Choice)**

	Responses	
	Percent	Count
Maja ehitustööde korraldamine	50%	25
Ventilatsioon ja küte	20%	10
Liginullenergiamaaja	6%	3
Päikesepaneelid	10%	5
Nutikodu	14%	7
Kunstilahendused fassaadidel	0%	0
<b>Totals</b>	<b>100%</b>	<b>50</b>

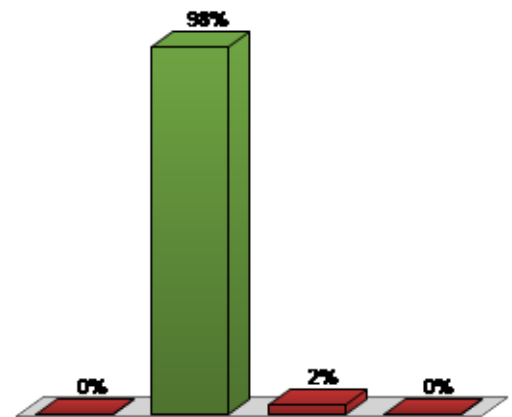


Question Statistics	
Mean	2,18
Median	1,50
Variance	2,19
Standard Deviation	1,48

Difficulty & Discrimination	
Mean Score of Correct	NA
Mean Score of Incorrect	NA
Standard Deviation of Scores	NA
Difficulty Index	NA
Discrimination Index	NA

11. Mida tähendab A energiaklassi juures olev number 90? (Multiple Choice)

	Responses	
	Percent	Count
Pilootalasse kuuluva korteri keskmist ruutmeetrite arvu	0%	0
Energiatõhususarvu (ETA) (c)	97,62%	41
Soojustuskihi paksust	2,38%	1
Pilootalasse kuuluvate majade keskmist vanust	0%	0
<b>Totals</b>	<b>100%</b>	<b>42</b>

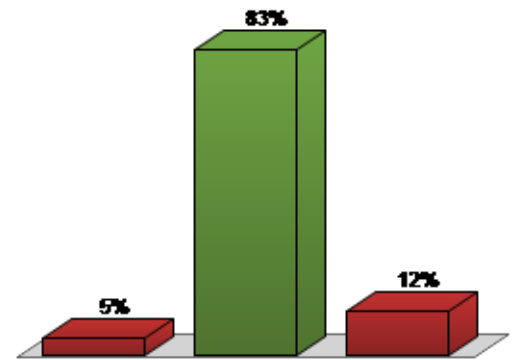


Question Statistics	
Mean	2,02
Median	2,00
Variance	0,02
Standard Deviation	0,15

Difficulty & Discrimination	
Mean Score of Correct	3,39
Mean Score of Incorrect	0,44
Standard Deviation of Scores	1,82
Difficulty Index	0,56
Discrimination Index	0,81

**12. Hinnanguliselt mitu % väheneb SmartEnCity projekti raames renoveeritud korteri (ca 50 m2) energiavajadus korteri kütmiseks keskmiselt? (Multiple Choice)**

Responses		
	Percent	Count
Alla 50%	4,88%	2
50...90% (c)	82,93%	34
Üle 90%	12,2%	5
<b>Totals</b>	<b>100%</b>	<b>41</b>

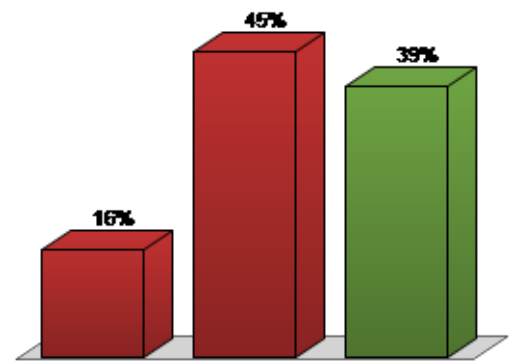


Question Statistics	
Mean	2,07
Median	2,00
Variance	0,17
Standard Deviation	0,41

Difficulty & Discrimination	
Mean Score of Correct	3,62
Mean Score of Incorrect	0,77
Standard Deviation of Scores	1,82
Difficulty Index	0,47
Discrimination Index	0,79

**13. Kus on otsest päikesevalgust (päike üle horisondi) ühe aasta jooksul rohkem, kas Eestis või ekvaatoril?  
(Multiple Choice)**

Responses		
	Percent	Count
Eestis	15,79%	6
Ekvaatoril	44,74%	17
Mõlemas kohas on valgeid tunde võrdselt (c)	39,47%	15
<b>Totals</b>	<b>100%</b>	<b>38</b>

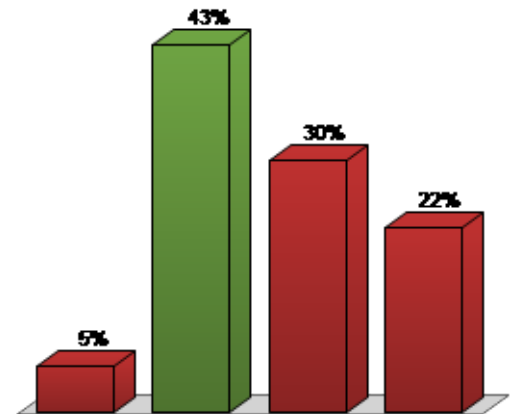


Question Statistics	
Mean	2,24
Median	2,00
Variance	0,50
Standard Deviation	0,70

Difficulty & Discrimination	
Mean Score of Correct	4,00
Mean Score of Incorrect	1,60
Standard Deviation of Scores	1,82
Difficulty Index	0,21
Discrimination Index	0,54

14. Teoreetiliselt kui palju päikesepaneeele oleks vaja, et katta terve maailma energiavajadus? (Multiple Choice)

	Responses	
	Percent	Count
Umbes Saaremaa suuruse maatüki jagu (ca 2600 km <sup>2</sup> )	5,41%	2
Umbes Hispaania suuruse maatüki jagu (ca 500 000 km <sup>2</sup> ) (c)	43,24%	16
Umbes Peruu suuruse maatüki jagu (ca 1 280 000 km <sup>2</sup> )	29,73%	11
Umbes Hiina suuruse maatüki jagu (ca 9 326 000 km <sup>2</sup> )	21,62%	8
<b>Totals</b>	<b>100%</b>	<b>37</b>

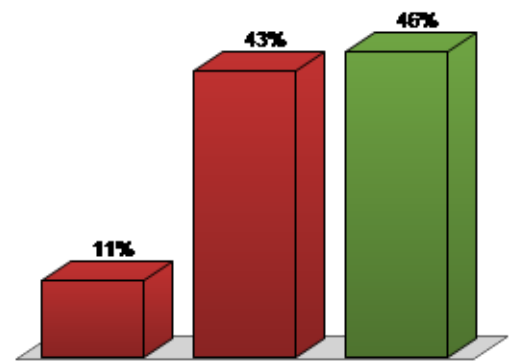


Question Statistics	
Mean	2,68
Median	3,00
Variance	0,76
Standard Deviation	0,87

Difficulty & Discrimination	
Mean Score of Correct	3,88
Mean Score of Incorrect	1,60
Standard Deviation of Scores	1,82
Difficulty Index	0,22
Discrimination Index	0,52

15. Duši all pesemine kulutab sooja vett: (Multiple Choice)

	Responses	
	Percent	Count
Sama palju kui vannis pesemine	11,43%	4
Kaks korda vähem kui vannis pesemine	42,86%	15
Neli korda vähem kui vannis pesemine ( <i>c</i> )	45,71%	16
<b>Totals</b>	<b>100%</b>	<b>35</b>

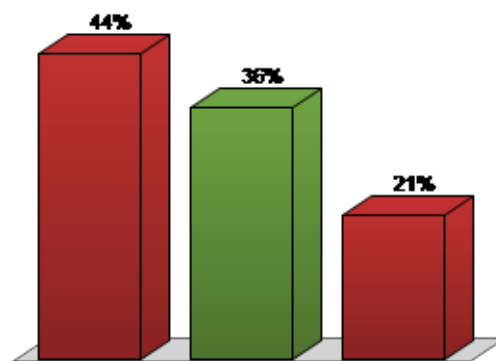


Question Statistics	
Mean	2,34
Median	2,00
Variance	0,45
Standard Deviation	0,67

Difficulty & Discrimination	
Mean Score of Correct	3,81
Mean Score of Incorrect	1,61
Standard Deviation of Scores	1,82
Difficulty Index	0,22
Discrimination Index	0,50

16. 2 mm suurune pragu aknaraami ümber võib lasta sisse sama palju külma õhku kui... (Multiple Choice)

Responses		
	Percent	Count
Akna lahti hoidmine 2 cm võrra	43,59%	17
Akna lahti hoidmine 8 cm võrra (c)	35,9%	14
Akna lahti hoidmine 14 cm võrra	20,51%	8
<b>Totals</b>	<b>100%</b>	<b>39</b>



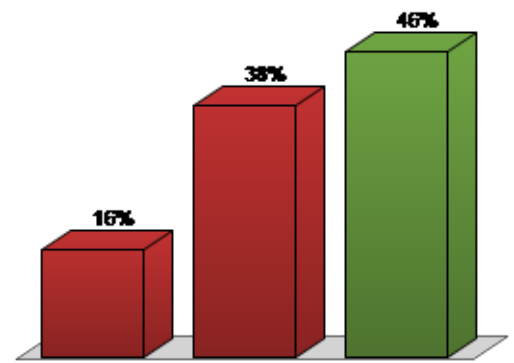
Question Statistics	
Mean	1,77
Median	2,00
Variance	0,59
Standard Deviation	0,77

Difficulty & Discrimination	
Mean Score of Correct	3,64
Mean Score of Incorrect	1,73
Standard Deviation of Scores	1,82
Difficulty Index	0,19
Discrimination Index	0,42



17. Keskmise Eesti 4-liikmeline pere tarbib ööpäevas ca 350 liitrit vett. Lekkiv WC pott võib kulutada:  
(Multiple Choice)

	Responses	
	Percent	Count
Kuni 50 liitrit päevas	16,22%	6
Kuni 100 liitrit päevas	37,84%	14
Kuni 200 liitrit päevas (c)	45,95%	17
<b>Totals</b>	<b>100%</b>	<b>37</b>



Question Statistics	
Mean	2,30
Median	2,00
Variance	0,53
Standard Deviation	0,73

Difficulty & Discrimination	
Mean Score of Correct	3,94
Mean Score of Incorrect	1,54
Standard Deviation of Scores	1,82
Difficulty Index	0,23
Discrimination Index	0,56